

AMBPACK BOILER

About Ambpack Boiler...

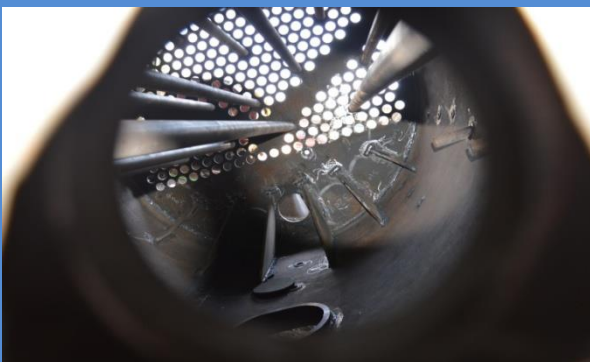
» *Ambpack Boiler is a three-pass, smoke tube, shell type boiler for wood firing. With an integral corrugated furnace.*

» *Ambpack Boiler is a Compact, Rugged and dependable boiler.*

» *Ambpack Boiler is a Fully wet back design with obtain 98% Dry Saturated Steam.*

» *Ambpack Boiler is available in the Range of 0.4TPH(882 lbs/hr) to 5 TPH (11023 lbs/hr) with pressure ranging from 10.54 kg/cm²(G) to 17.50 kg/cm²(G).*

» *Ambpack Boiler Offers a rated output on wood of 3300 kcal/kg (5940 btu/lb) and efficiency up to 76%.*



» *Ambpack Boiler Solid fired can be modified to oil firing with minimum downtime.*



Singnificant user Benefits...

Easy Operation & Maintenance: *The Strategic position of charging and ash boiler easy to operate. The steam pressure at boiler outlet make the boiler easy to operate. The steam pressure at boiler outlet makes the ON/OFF system automatic. Optimally sized smoke tubes facilitate easy cleaning and maintenance of pressure parts.*

Complete combustion

:- The location of primary air & secondary air jets coupled with the post combustion chamber ensures complete combustion.

Minimum carry over:-

Different ash trapping points resulting in negligible carry over.

Compact design :- The integral corrugated furnace makes for a compact and rugged design . it can withstand the high cyclic thermal stresses due to ON/OFF Operation Of burner.



High Efficiency :-

Efficiency of 76% on wood at calorific value of 3300 kcal/kg is achievable. A higher efficiency of about 82% can be achieved with a heat recovery unit depending on wetness and quality of wood.



Dry steam:- The shell type design with dry pan assembly ensure dry steam .

Low stack temperature :- The unique construction of furnace and heat exchanger ensure low stack temperature at boiler outlet. The low stack temperature ensure high efficiency.

Controls and

Safeties...» The Ambpack Steam Boiler is Provided with adequate safety systems.

» One Mobrey system for automatic pump operation and maintaining the water level. It ensure water in the boiler at all times and trips the boiler at low levels.

» Pressure operated automatic shutdown systems for combustions to control the steam pressure.